

German Piétrain expanding its strong market position

... the brand for Piétrain boars!



“German Piétrain”, the brand for Piétrain boars of the Baden-Württemberg, Rheinland and Schleswig Holstein breeding associations has met and even surpassed all expectations in the year 2009.

There has been a steady rise in the animals’ performance level in the course of and through trans-regional estimation of breeding values from Flensburg to Lake Contance.

After a successful launch of the brand during the Bundeseliteauktion (the central auction for the German breeding elite) in Neumünster in September 2009, the affiliated elite breeders were able to expand their market position. More than 3.500 boars of the Piétrain nucleus breeding concept have been marketed in 2009.

The basis for breeding in the abovementioned organisations is the world’s largest Piétrain breeding animal population, which has been able to realise a clear and substantial breeding progress by means of transregional estimation of breeding values. Thanks to a comprehensive check programme and transparent data documentation German Piétrain boars enjoy increasing acceptance and were able to gain market shares against all competitors.

German Piétrain’s principal customers are Spain, Portugal, the Netherlands and France next to the German state AI Centres and, naturally, numerous piglet producing businesses.



Breeding pigs from Baden Württemberg

Our genetic is on demand:

2.400 BW*boars per year
6.100 BW*landrace sows per year
40.000 BW*hybrids per year
1,1 million semen doses/year

SZV Schweinezuchtverband
Baden-Württemberg e.V.

ZEG Zuchtschweine-Erzeugergemeinschaft
Baden-Württemberg w.V.

**- die Absatzorganisation des
Schweinezuchtverbandes
Baden-Württemberg e.V.**

D-70599 Stuttgart
Im Wolfer 10

Tel.: 0 049 - 711 / 459 738-0

Fax: 0 049 - 711 / 459 738-40

Internet: <http://www.saustark.de>

eMail: Info@saustark.de

X WE SUPPLY:

TESTED BOARS, very appropriate for the production of quality meat

BW*PIÉTRAIN

BW*GERMAN LANDRACE

BW*LARGE WHITE

BW*SCHWÄBISCH HÄLLISCHE



BW*LANDRACE AND BW*HYBRID SOWS, fertile with excellent breeding record

X WE OFFER:

- professional transport
- delivery date
- guaranteed sanitary conditions
- advice



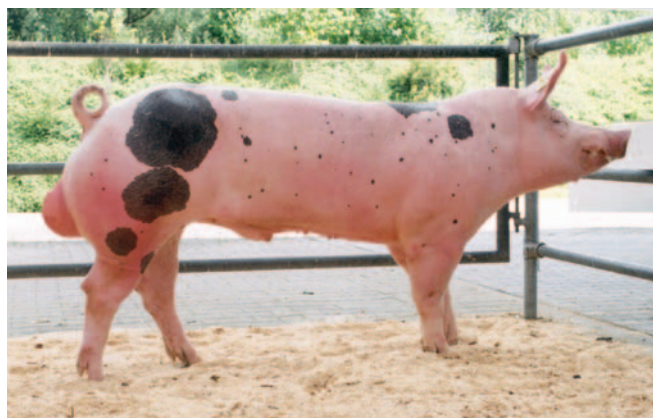
~~TOP~~ Genetic in Europe

~~X~~ BW*PIÉTRAIN

- high percentage of lean meat
- excellent back and ham

Test results (station):

daily weight increase in gr. (30 – 105 kg; PI x BW*Hyb)	889
daily weight increase in gr. (30 – 105 kg; PI)	815
feed conversion rate (30 – 105 kg; PI)	1 : 2,39
fat-meat ratio (PI)	1 : 0,14



~~X~~ BW*GERMAN LANDRACE

- stress resistant (Halothan + MHS-Gentest – NN)
- meat: first class quality
- fertile
- excellent brood sow
- from the German Federal State of Baden Württemberg



Test results (station):	daily increase in gr. (30 – 105 kg)	962
	feed conversion rate (30 – 105 kg)	1 : 2,54
	fat-meat ratio	1 : 0,45

Breeding yields:	born piglets per sow/year	27,2
	raised piglets per sow/year	24,4
	(top ten hybr.) litter per year	2,41

